



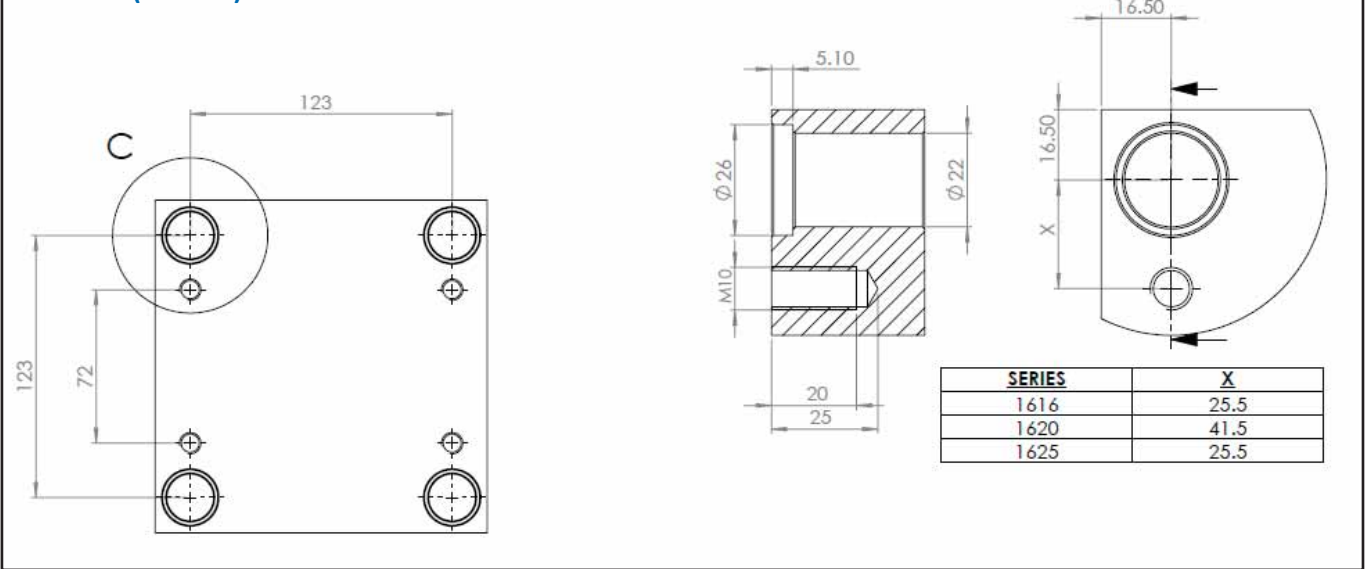
Standard Machining Procedure for Custom Mould Bases



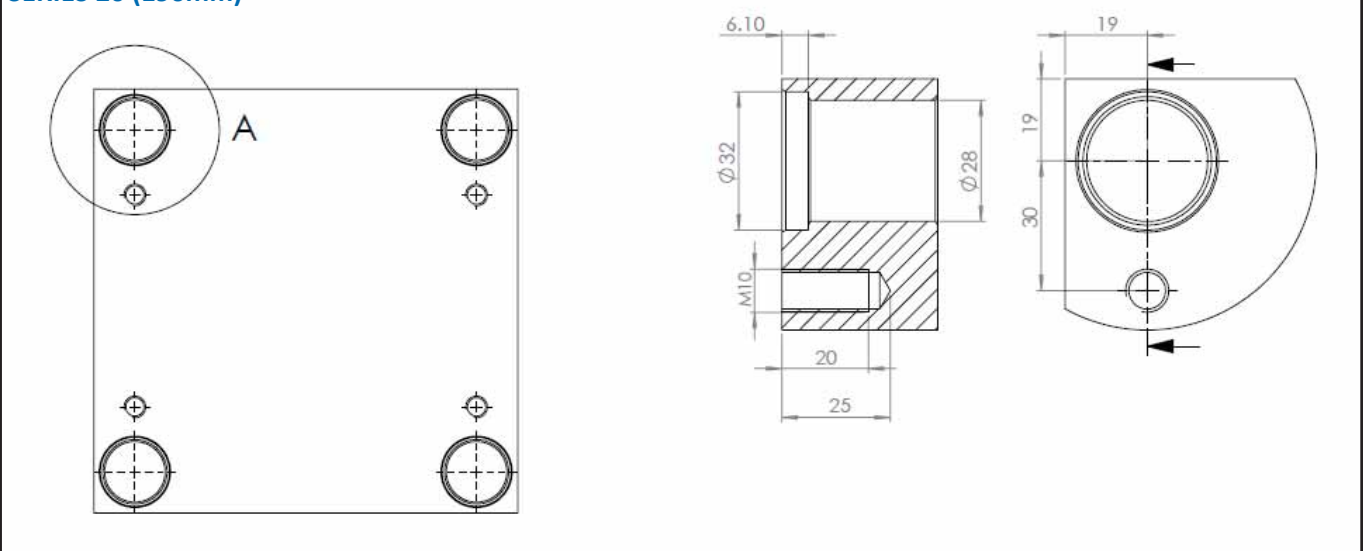
UTP Standard Bore Pattern for Moulds



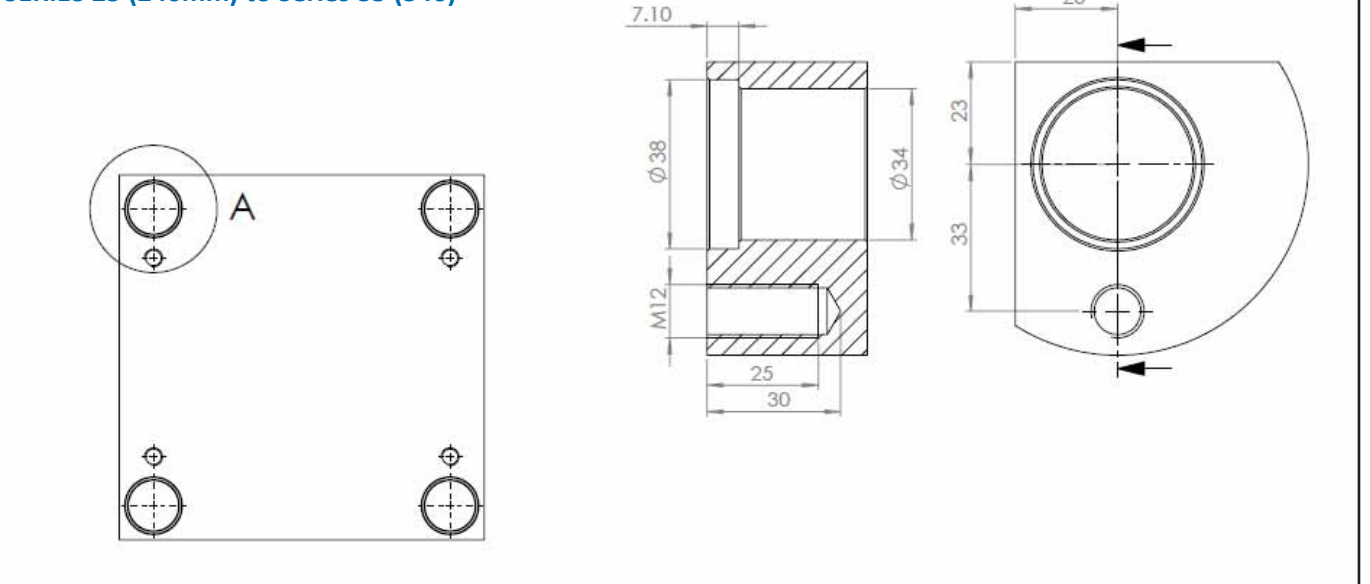
SERIES 16 (156mm)



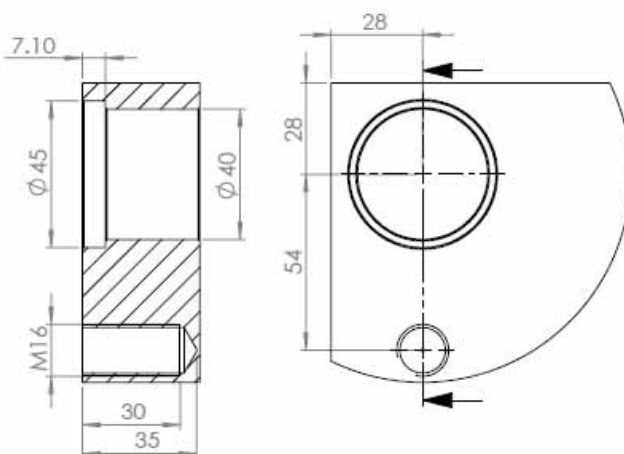
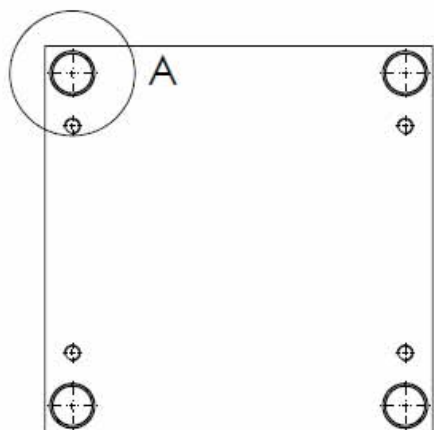
SERIES 20 (196mm)



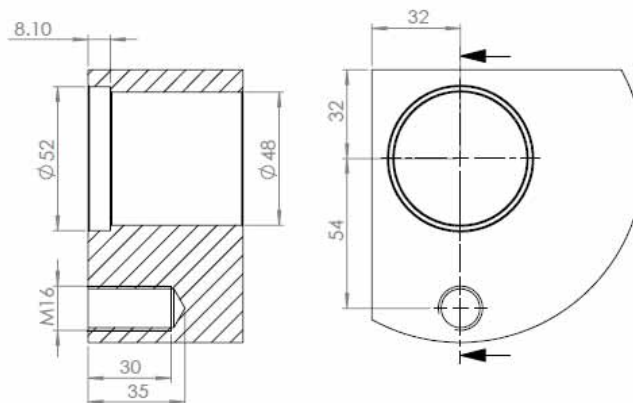
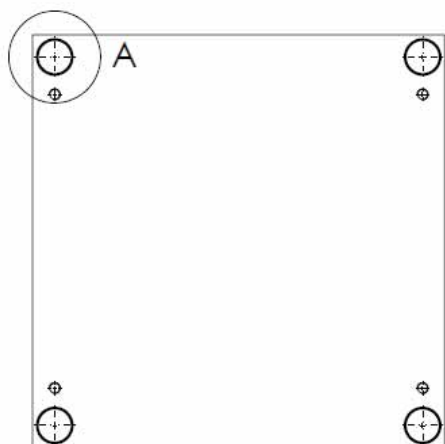
SERIES 25 (246mm) to Series 35 (346)

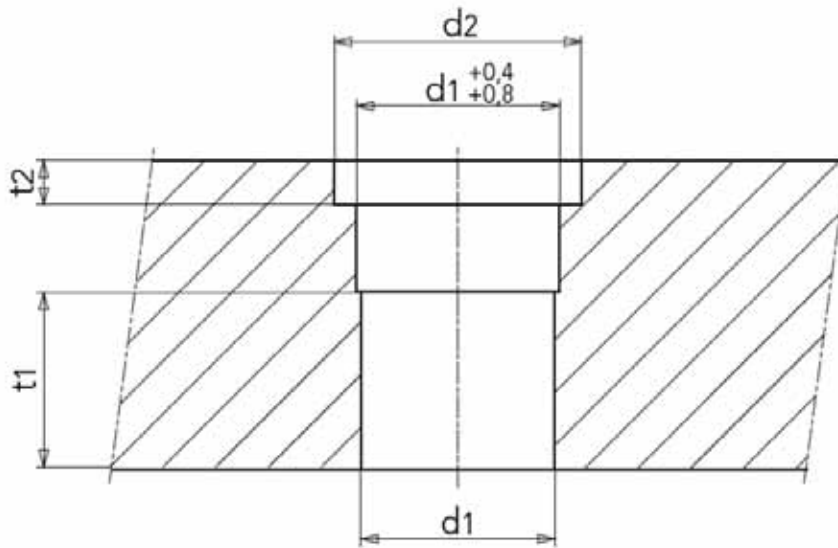


SERIES 40 (396mm) to Series 55 (546mm)



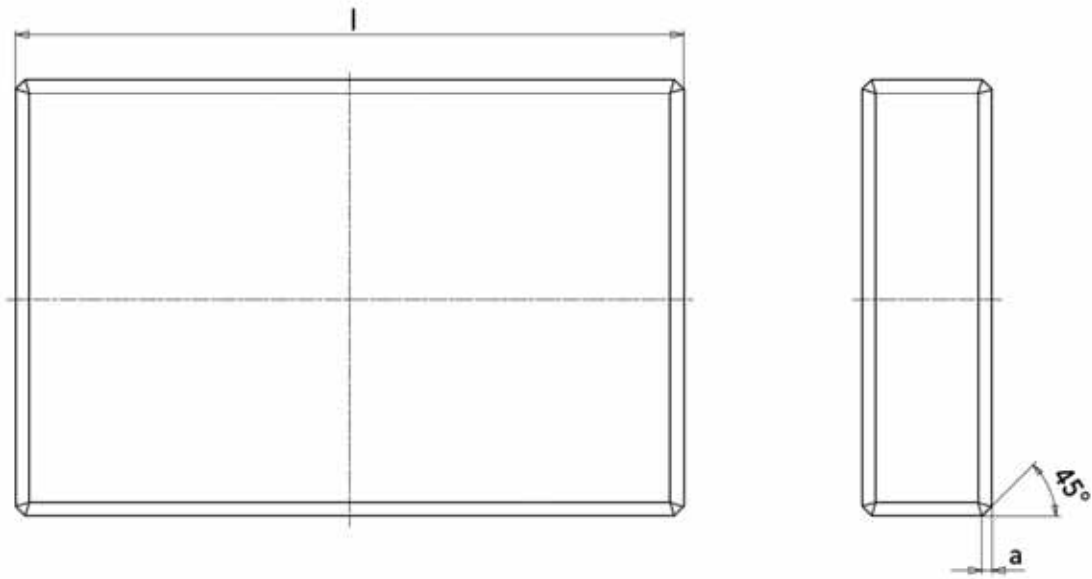
SERIES 60 (596mm)





d1	t1	d2	t2
Ø 22	106mm	Ø 26	5.1
Ø 28	136mm	Ø 32	6.1
Ø 34	166mm	Ø 38	7.1
Ø 40	196mm	Ø 44	7.1
Ø 48	196mm	Ø 52	8.1
Ø 60	246mm	Ø 65	10.1
Ø 100	246mm		
Ø 150	296mm		
Ø 200	296mm		
Ø 250	296mm		

Standard and Drilled Plates



Chamfer Size / Standard

L	a Min	a Max
<156	0.8mm	1.0mm
< 396	1.0mm	1.2mm
<596	1.4mm	1.6mm
>596	1.8mm	2.0mm

Available Chamfer Size

L	a Min
45°	1, 1.5, 2, 3, 4, 5, 6, 8 mm
30°	1.5mm
Radius	1, 1.5, 2, 3, 4 mm

