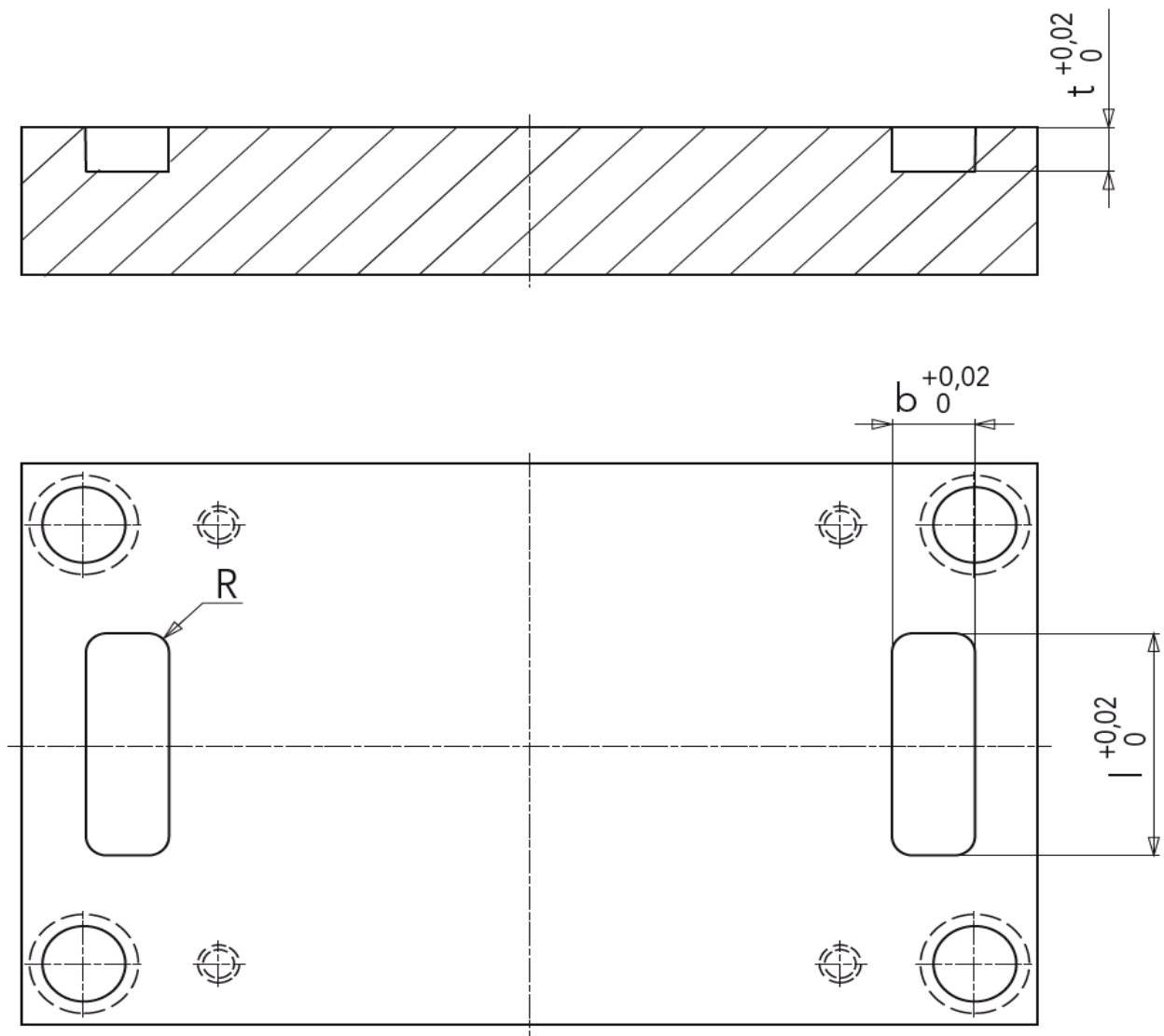


Type A: Pocket Machining with Taper Cutter

Pocket Depth (t)	Corner Radius Min	Bottom Radius	Taper Angle (w)
50mm	10	0, 1, 2	3,5,10,15,20
70mm	12	0, 1, 2, 4	3,5,10
100mm	12	0, 1, 2, 4	3,5
120mm	12	0, 1, 2, 4, 6	3

Type B: Pocket Machining with Ball Nose Cutter

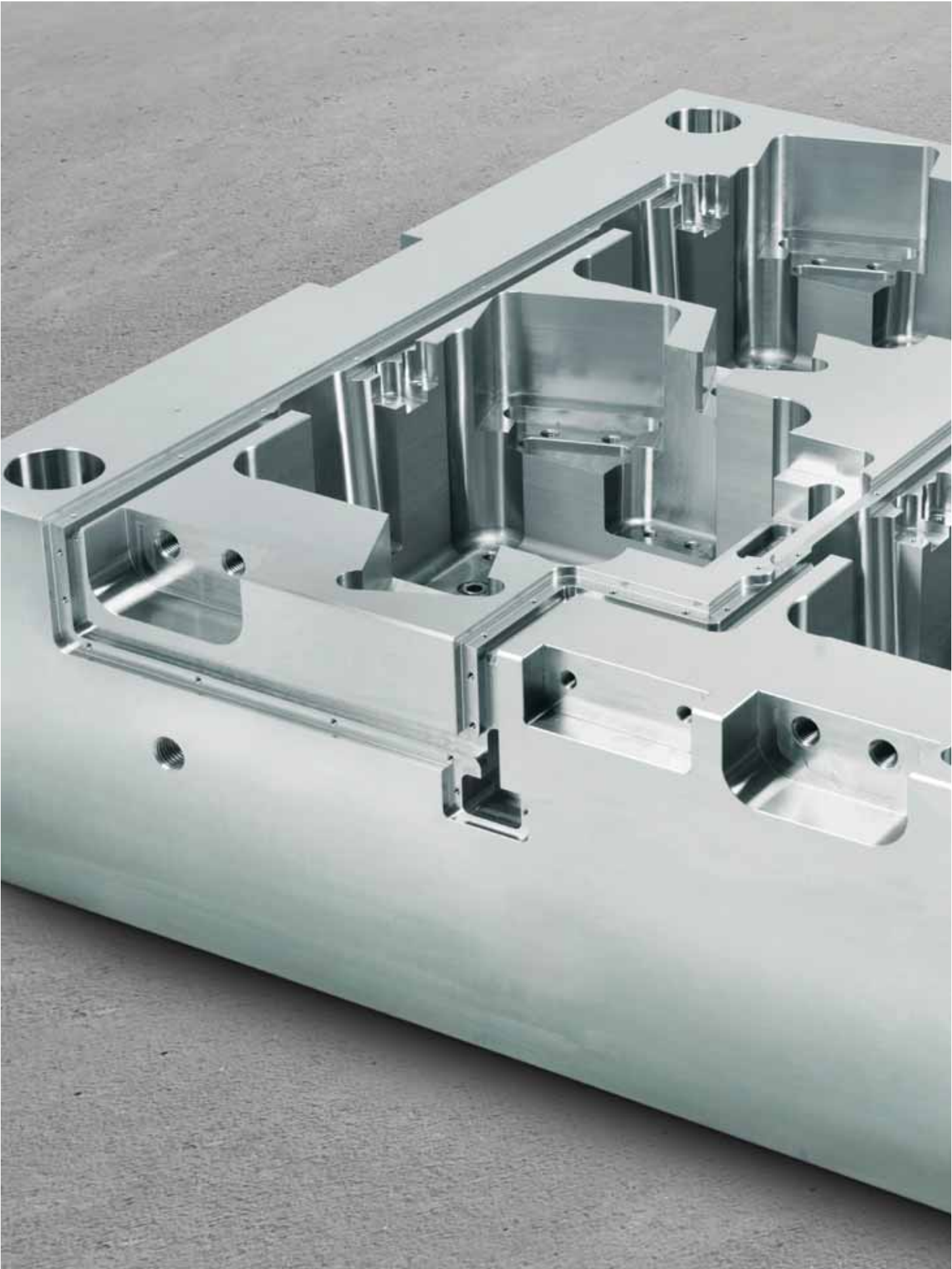
Pocket Depth (t)	Corner Radius Min	Bottom Radius	Taper Angle (w)
70mm	8	0, 1, 2, 4	All Angles
100mm	10	0, 1, 2, 4	"
125mm	16	0, 1, 2, 4, 6	"
150mm	20	0, 1, 2, 4, 6	"
180mm	25	0, 1, 2, 4, 6	"
230mm	28	0, 1, 2, 4, 6	"
300mm	35	0, 1, 2, 4, 6	"

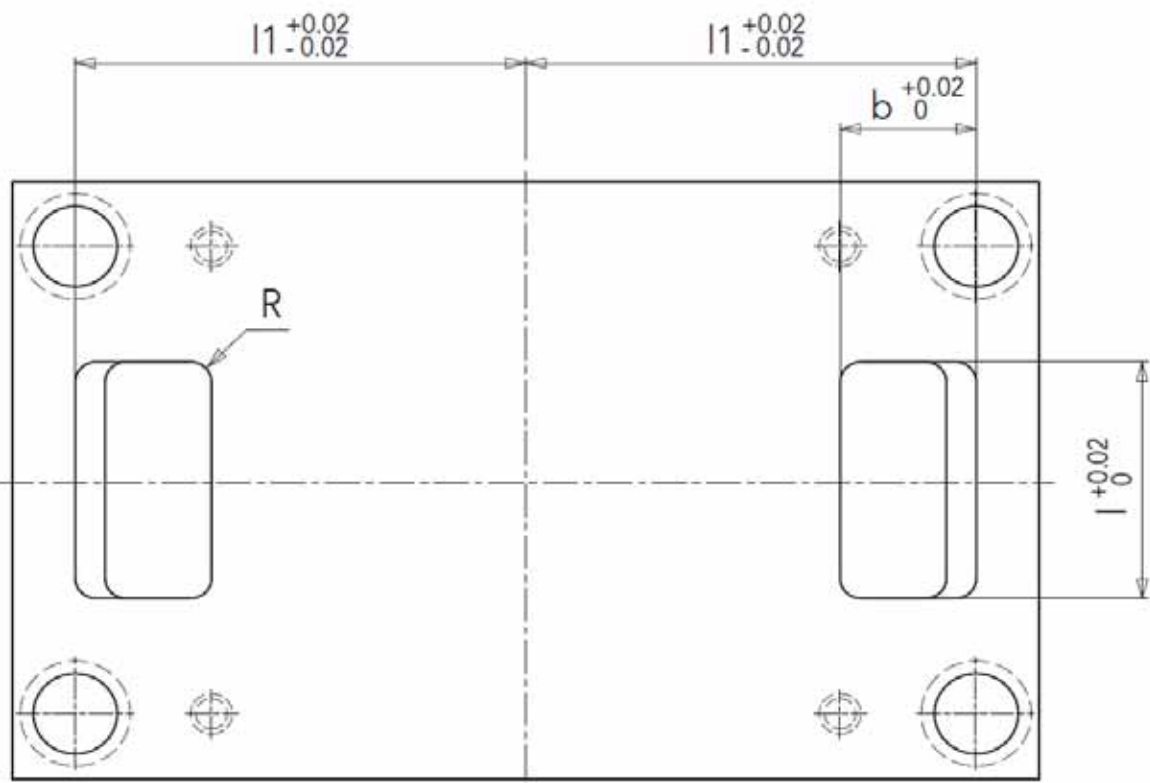


Corner Radius and Depth

Pocket Depth (t)	Corner Radius Min	Bottom Radius
25mm	4	0, 1, 2
35mm	6	0, 1, 2, 4
45mm	8	0, 1, 2, 4

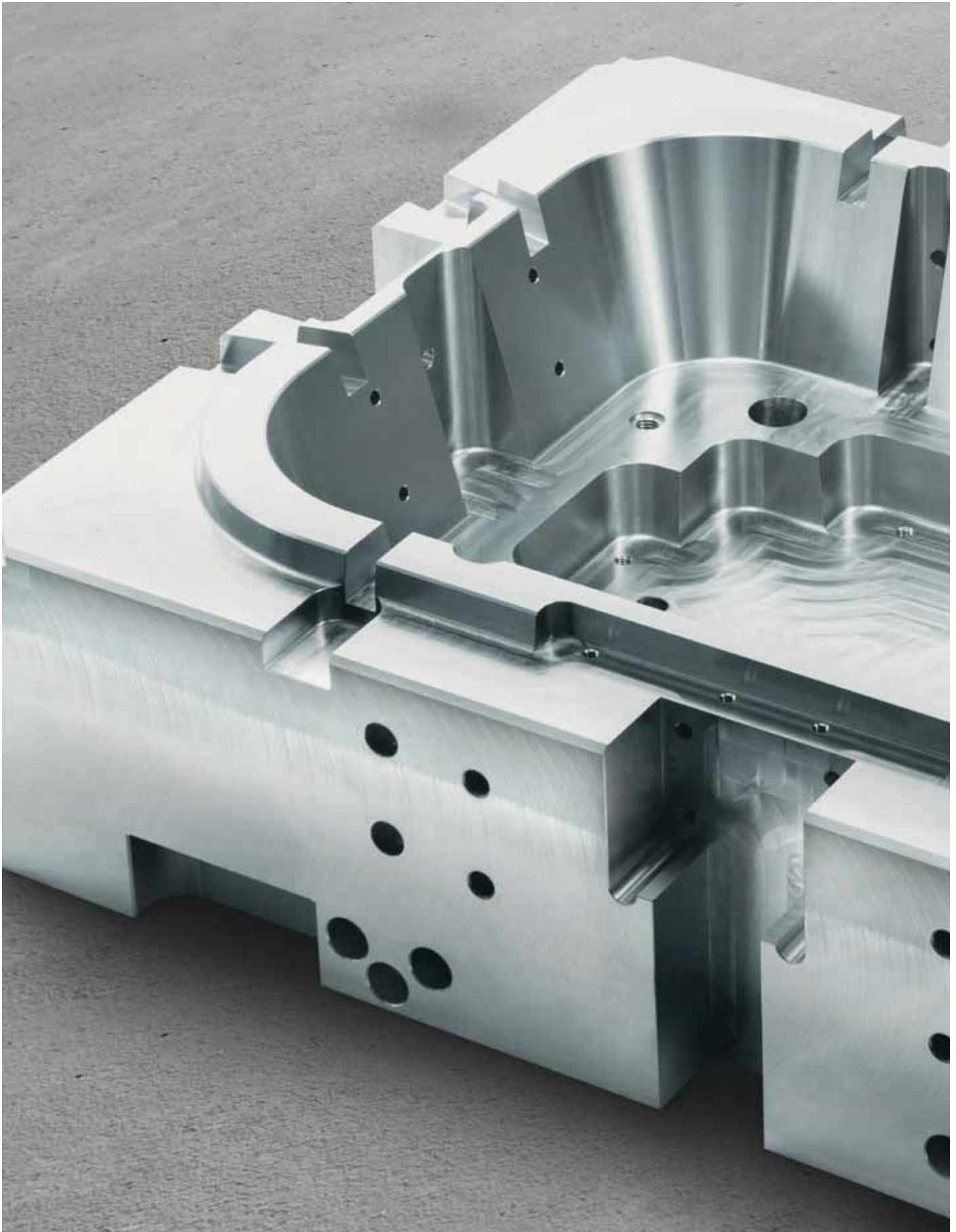
Application Example - Side Pocket Machining

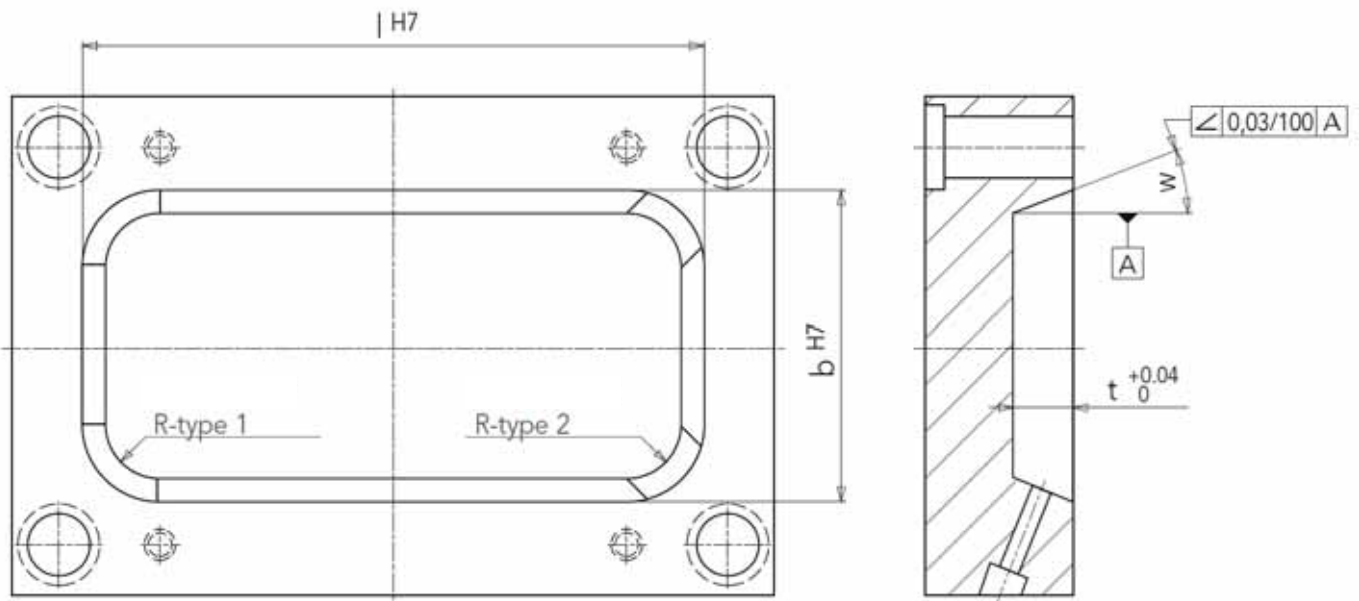




Corner Radius and Depth

Pocket Depth (t)	Corner Radius Min	Bottom Radius	Taper Angle (w)
25mm	4	0, 1, 2	All Angles
35mm	6	0, 1, 2, 4	"
45mm	8	0, 1, 2, 4	"





Type A: Pocket Machining with Taper Cutter

Pocket Depth (t)	Corner Radius Min	Bottom Radius	Taper Angle (w)
50mm	10	0, 1, 2	3,5,10,15,20
70mm	12	0, 1, 2, 4	3,5,10
100mm	12	0, 1, 2, 4	3,5
120mm	12	0, 1, 2, 4, 6	3

Type B: Pocket Machining with Ball Nose Cutter

Pocket Depth (t)	Corner Radius Min	Bottom Radius	Taper Angle (w)
70mm	8	0, 1, 2, 4	All Angles
100mm	10	0, 1, 2, 4	"
125mm	16	0, 1, 2, 4, 6	"
150mm	20	0, 1, 2, 4, 6	"
180mm	25	0, 1, 2, 4, 6	"
230mm	28	0, 1, 2, 4, 6	"
300mm	35	0, 1, 2, 4, 6	"